

1/10th 4WD Electric Power R/C Off-Road Truggy(1)(2)

Specifications:

Styles	LENGTH	WIDTH	WHEEL BASE	DRIVE SYSTEM	GROUND CLEARANCE	DIAMETER OF WHEEL	WIDTH OF WHEEL	GEAR RATIO
Truggy(1)	412mm	320mm	275mm	4WD Shaft Drive	35mm	100mm	52mm	1:8.133
Truggy(2)	400mm	300mm	275mm	4WD Shaft Drive	35mm	100mm	52mm	1:8.133

Styles	Motor	KV (Brushless Motor)	Motor RPM range	Battery Specification	ESC Specification	ESC Temperature protection	Under Voltage Protection	Gear Ratio	Speed
Brush Version	Rc540		20000rpm	NiMH-7.2V-1800mAh	Continue Forward 150A/Continue outward 100A			1:10.39	30KM
Brushless Version	3650 (RC540)	3300KV	23760rpm 24420rpm	NiMH-7.2V-2000mAh LiPO-7.4V-3600mAh 25C	Brushless 45A	98°(+/-3-5 centigrade)	Below 5V1A	1/7.38	40KM 48KM
TOP Brushless Edition	3650 (RC540)	2724KV	22882rpm 30236rpm	NiMH-8.4V-3000mAh LiPO-11.1V-3600mAh 25C	Brushless 45A w/Fan	98°(+/-3-5 centigrade)	below 7.2V1A	1/8.13	62KM

Styles	GENERAL GEAR			PRO1.GEAR			PRO2.GEAR(metal)			
	Diff. Main Gear	Motor Gear	Gear Ratio	Diff. Main Gear	Motor Gear	Gear Ratio	Diff. Main Gear	Motor Gear	Gear Ratio	
Brush Version	(1)	#11164-64T	#11120-18T	1:10.39	#11188-48T	#11177-17T	1:8.25	#11184-64T	#11193-23T	1:8.13
	(2)	#11164-64T	#11120-18T	1:10.39	#11188-48T	#11177-17T	1:8.25	#11184-64T	#11193-23T	1:8.13
Brushless Version	(1)				#11188-48T	#11179-19T	1:7.38	#11184-64T	#11193-23T	1:8.13
	(2)				#11188-48T	#11179-19T	1:7.38	#11184-64T	#11193-23T	1:8.13

Spare Part

02014-Steering Hub (L/R) 2P	02015-Front Hub Carrier (L/R) 2P	02013-Rear Upright+Set Screws 4*4mm 2P	11017-Wheel Axle 2P	02032-Universal Joint Cup C 2P
02016-Universal Joint Cup B/Set Screws 4*4 2P	02021-Rear Suspension Arm Holder	02022-Front Suspension Arm Holder	03011-Motor (RC540)	03007-Motor Mount
03601-Chassis	03990-Radio Tray	03013-Radio Tray Mount A	03610-Battery Cover	03014-Battery (7.2V 1800mAh)

Spare Part

04004-Battery Holder	03009-Battery Cover Post 2P	02074-Steering Ackerman Joint	02025E-Steering Assembly A	02075-Steering Assembly B
03401-Gear Shelter	03300-Motor Heat Proof Cover	11164-Diff. Main gear (64T)	11120-Motor gear (18T)	02029-Crown Gear
02030-Drive Gear	02024T-Diff. Main Gear Complete	03015-Drive Gear Shaft+E-Clips	02066-Diff. Pinions+Pin 2P	02039-Differential Box +Seals+Washers 2P
02051T-GearBox	10391-Servo Link 2P	02372-Servo Arm 2P	Sp3001-Servo(3Kgs)	04003-Centre Drive Joint
08027-Pin 2*10 10P	02063-Rear Lower Suspension Arm Pin A $\phi 3*54mm$ 2P	02036-Front Lower Suspension Arm Pin A $\phi 3*44mm$ 2P	02057-Antenna Pipe 4P	03006-Antenna Mount
02017-Suspension Reinforcement Brace 2P	03018-Electronic Speed Controller	03008-Switch Cover	2530-Power Commutator	17701-Truggy Wheel Rim 2P
17702-Pre-Mounted Truggy Tyre 2P	17703-Truggy Wheel Complete 2P	02053-R-Clip 8P	02101-Steering Bushing 12P	02103-Zip Tie 6P

Pro. Off-Road Truggy(1)(2)-Spare Parts

106004-Aluminum Shock Absorber 2P	03302-Brushless Motor KV:3300	37017-Brushless Electronic Speed Control 45A	17701 PL(Gold) 17701 PB(Blue) Chrome Plated Spoke Rim With Sprayed 2P	102048-Aluminum Nut M3 8P
102049-Aluminum Nut M4 4P	03200-Battery Ni-MH (7.2V 2000mAh)	11188-Diff. main gear (48T) 11184-Diff. main gear metal (64T)	11179-Motor gear (19T) 11193-Motor gear metal (23T)	

TOP Version Off-Road Truggy(1)(2)-Spare Parts

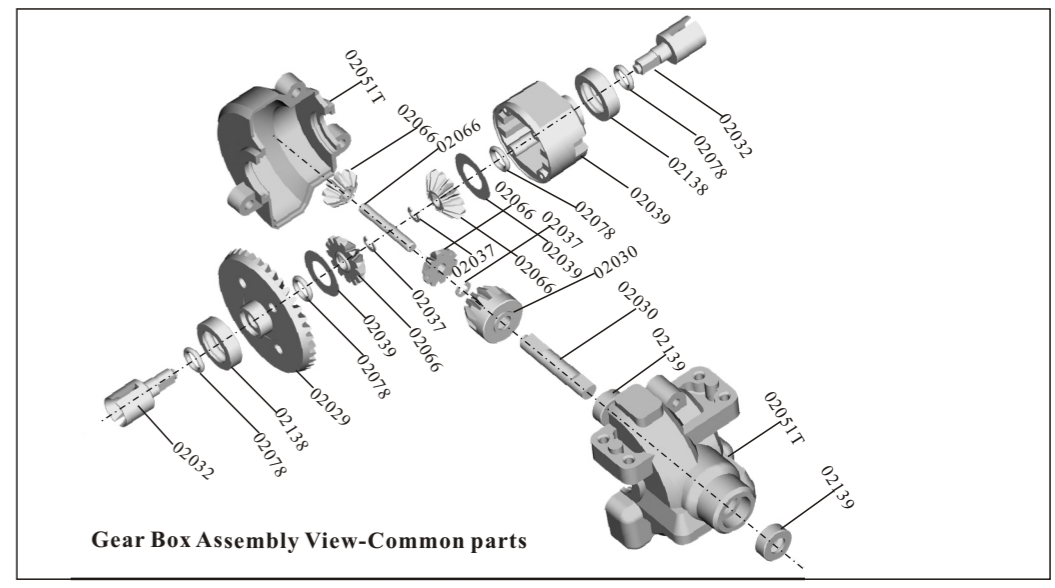
03404-Brushless Motor KV:2724	37017-Brushless Electronic Speed Control 45A	30324-Battery Ni-MH 8.4V 3000mAh	11184-Diff. main gear metal (64T)	11193-Motor gear metal (23T)
-------------------------------	--	----------------------------------	-----------------------------------	------------------------------

Off-Road Truggy(1)(2)-Upgradable Optionals

102210-Aluminum Front Hub Carrier (L/R) (AL.)+Cap Head Mechanical Screws 3*12mm*2P/3*11mm*4P	102212-Aluminum Rear Hub Carrier (L/R)+Flat Head Mechanical Screws 3*15mm*2P+M4*4 Grub Hex. Screw 2P	102042-Aluminum Wheel Hex. Mount 4P	102048-Aluminum Nut M3 8P
102049-Aluminum Nut M4 4P	106004-Aluminum Shock Absorber 2P	106015-Universal Drive Joint 2P	106617-Front/Rear Servo link-2P(AL.)+Flat Head Mechanical Screws 3*14mm*4P+Nut M3*4P
120102-Aluminum Rear Lower Arm 2P	106622-Aluminum Front Shock Tower	106623-Aluminum Rear Shock Tower	107001-Carbon Fibre Chassis
			107002-Carbon Fibre Radio Tray

Off-Road Truggy(1)(2)-Upgradable Optionals

107022-Carbon Fibre Billet Front Shock Tower-1P	107023-Carbon Fibre Billet Rear Shock Tower-1P	03204-LiPO Battery 7.4V 3600mAh 25CC	28434-LiPO Battery 11.1V 3600mAh 25CC	28347-Charger
102240-Aluminum Ackerman Plate	102260-Aluminum Front Gear Box Mount	102261-Aluminum Rear Gear Box Mount	102227-Front/Rear Suspension Arm Brace (AL.)	103371-Lightweight Motor Mount(AL.)+Flat 3*8mm*4P/Cap 3*8mm*2P Head Machine Screw
102257-Steering Servo Saver Set-1P	103310-Carbon Fibre Battery Cover	103013-Servo Mount (AL.)+Flat Head Machine Screw 3*8mm*2P+Cap Head Machine Screw 3*8mm*4P	103004-Aluminum Battery Mount-2P+Flat Head 3*10mm 4P	103006-Aluminum Antenna Mounts-1P +Flat 3*10*1P+Cap 3*10 1P Head Machine Screw
103009-Aluminum Battery Posts+Flat Head 3*10mm 2P				



Spare Part

02100-Wheel Hex. 8P	02037-E-Clip (7 $\phi 4 \phi 2.5 \phi 2.3$) 12P	02139-Ball Bearing $\phi 10*\phi 5*4$ 8P	02138-Ball Bearing $\phi 15*\phi 10*4$ 6P	02078-O-Ring 12P
02079-Oil Bearing $\phi 15*\phi 10*4$ 6P	02080-Oil Bearing $\phi 5*\phi 10*4$ 8P	06007-Shock Pivot Ball 4P	02055-M4 Nylon Nut 8P	02102-M3 Nylon Lock Nut 6P
06023-Shock Ball Stud 4P	02038-Ball Head Screw 6P	02098-Grub Screw M3*4 8P	02099-Grub Screw M4*4 10P	06080-M3*12 Grub Hex. Screw 10P
02127-M3*14 Grub Hex. Screw 10P	02194-Round Head Self-Tapping Screw 2.6*12 4P	02085-Round Head Self-Tapping Screw 2*8 8P	02086-Round Head Self-Tapping Screw 2*10 10P	81220-13 Round Head Self-Tapping Screw 3*10 10P
02096-3*10 Cap Head Machine Screw 6P	02093-Column Head Screw M3*10 10P	08024-Discal Screw M3*11 8P	86077-Countersunk Self-Tapping Screws 3*8 9P	02087-Countersunk Cross Head Self-Tapping Screw 3*10 15P
02088-Countersunk Cross Head Self-Tapping Screw 3*14 13P	02089-Countersunk Cross Head Self-Tapping Screw 3*15 9P	02092-ISO 3*10 Screw 8P	02184-Cap Head Self-Tapping Screw 3*12 10P	86074-Cap Head Self-Tapping Screw 3*10 10P
86073-Cap Head Self-Tapping Screw 3*8 6P	85020-Cap Head Machine Screws 3*12mm 4P			

Off-Road Truggy(1)-Spare Parts

06002-Shock Absorber	37015-Front Bumper	37016-Rear Bumper	37011-Body Post 4P	37010-Post Mount (Front)
12007-Front/Rear Dogbone 100mm*4 2P				
12005-Front/Rear Link 50mm	06018-Front Lower Arm Pin B 3*27.5mm 2P	12001-Front Lower Arm 2P	12002-Rear Lower Arm 2P	06013-Front Shock Tower
12006-Steering Link 44mm	08019-Rear Lower Arm Round Pin B 3*24.5mm 2P			06014-Rear Shock Tower

Off-Road Truggy(2)-Spare Parts

17704-Shock Absorber 2P	08005-Front Lower Suspension Arm 2P	08006-Rear Lower Suspension Arm 2P	08012-Front/Rear Shock Tower	06003-Front Bumper
02005-Rear Bumper	08042-Front/Rear Steering Link 2P	08030-Front Shock Tower Holder	08020-Front Lower Arm Pin B 33mm 2P	08059-Front/rear Dogbone 89.5mm 2P
		08031-Rear Shock Tower Holder	08019-Rear Lower Arm Pin B 30mm 2P	08007-Body Post 4P

Optionals

80119-Transmitter 2-Channel (AM)	03020-Receiver (AM)	80226G-Transmitter 3-Channel 2.4G	28462-Receiver 2.4GHZ	80300-Transmitter 2-Channel 2.4G	28464-Receiver 2.4GHZ
80309-Transmitter 2.4G	28462-Receiver 2.4GHZ	80311-Transmitter 2.4G	28463-Receiver 2.4GHZ	80308-Transmitter 2.4G	58168-Radio PCB
				80308G-Transmitter 2.4G	28462-Receiver 2.4GHZ

